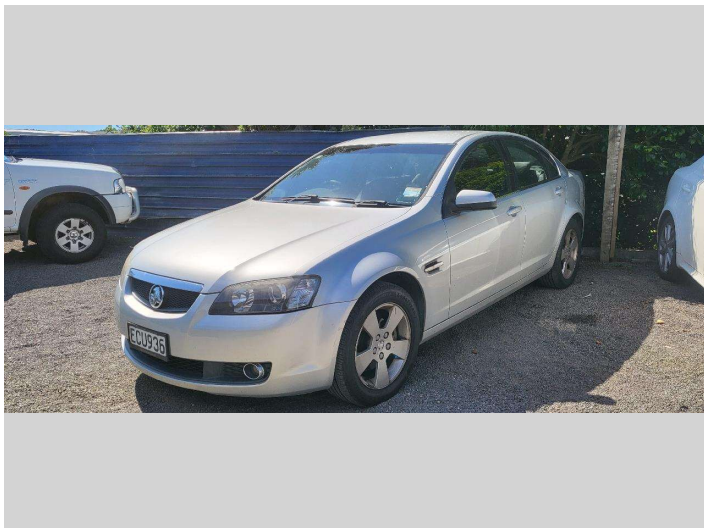


2007 Holden COMMODORE CALAIS SEDAN V6




Purchase Price **\$11,990**

Includes GST, Registration & Licensing Note: A Clean Car fee/rebate does not apply to this vehicle

Indicative repayments

\$78.65 per week*

Based on a 48 month term & \$500 deposit.
Total repayments (208) = \$16,859.95




Peace of Mind



Top features

- » ABS Braking
- » Air Bags
- » Air Conditioning
- » Automatic
- » Bluetooth
- » C.D/Stereo
- » Car Alarm
- » Central Locking
- » Central Locking
- » Cruise Control
- » Cruise Control
- » Factory Alloys
- » Keyless Entry
- » Parking Sensors
- » Petrol
- » Power Steering
- » Power Windows
- » Steering wheel contols...

Body Style	4 door, Saloon	Reg No.	ECU936
Odometer	171,267 km	Ext Colour	Met.Silver
Engine	3564 cc, Internal Combustion	History	NZ New, 5 owners
Fuel Type	Petrol	Seats	5 seats
Transmission		CO2 Emissions	☆ ☆ ☆ ☆ ☆ ☆
Rear Wheel			300 grams/km
Wheels	-	Energy Economy	☆ ☆ ☆ ☆ ☆ ☆
VIN	6G1EX55778L955131	Annual fuel cost of \$4,900	12.5L per 100km
Interior	Black, Cloth	<small>Cost per year is an estimate based on petrol price of \$2.80 per litre and an average distance of 14000 km. Emissions and Energy Economy figures standardised to 3P WLTP.</small>	
Safety		Stock ID:	7817
	<small>Based on 2023 UCSR rating for 06-13 models</small>		



Superior Cars | Phone 06 759 9992 | Email superior.cars@xtra.co.nz
188 St Aubyn Street, New Plymouth, New Plymouth 4310, New Zealand
www.superiorcars.co.nz

* Superior Cars is not a lender nor a financial adviser. Any amounts displayed should not be seen as an offer of finance or taken as financial advice. The interest rate, fees and loan term used in this calculation may not actually represent those available from lenders. Actual interest rates, fees and loan terms will vary per lender and are typically based on an assessment of your credit risk and responsible lending criteria. Any repayment amounts displayed are indicative only and have been calculated using several other indicative inputs. The interest rate used in this calculation is an arbitrary 16.00%, however exact interest rates vary per lender. The term of the loan used in this calculation is 48 month. Exact terms available vary per lender although options typically include 6, 12, 18, 24, 36, 48 and 60 months. This calculation also includes two typical mandatory fees charged by lenders. These are an account admin fee of \$5.00 per month (other payment frequencies may be available) and a one-off establishment fee of \$360.00. Typically, this fee can be paid upfront or, as in this calculation, be capitalised over the contract term, ie. included in the loan amount. These fees can vary per lender and other non-mandatory fees and charges may also apply. The total amount of repayments has been calculated by multiplying 208 weekly repayments (based on a 48 month term) by the weekly repayment amount of \$78.65 which equals \$16,859.95. This calculator does not consider any of your own personal circumstances and we strongly suggest you seek budgeting advice prior to committing to any loan contract. Responsible lending criteria and lender terms and conditions will likely apply to any finalised loan contract. Proof of security and/or vehicle insurance may also be required before proceeding.