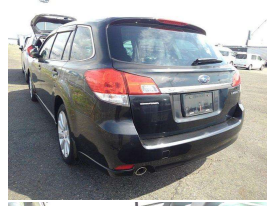


# 2010 Subaru LEGACY 2.5 Wgn



## VEHICLE INFORMATION

### Cash Price

Includes GST,  
Registration &  
Licensing

# \$12,990

Note: A Clean Car fee/rebate does not apply to this vehicle

Finance this vehicle  
from only

# \$85.19

per week\*

Total Amount Payable

\$18,220.29



Gain peace of mind  
with Mechanical  
Breakdown Insurance.  
Ask us how.

### Body

5 door, Station Wagon

### Odometer

97,450 km

### Engine

2500 cc, Petrol

### Fuel Type

Petrol

### Transmission

CVT, 4WD

### Wheels

-

### VIN

-

### Reg No.

-

### Ext Colour

Black

### History

Ex-Overseas

### Seats

5 seats, Leather

### Interior

Black, Leather

### Audio

-

### Stock ID

7372

### Exterior Features

- » Alloys
- » Electric Mirrors (Retractable)
- » Remote Locking/Unlocking

### Interior Features

- » Air Bags
- » Air Conditioning
- » CD Player
- » Digital Display
- » Keyless Entry/Start
- » Steering wheel controls

### Mechanical Features

- » ABS
- » Auto Lights
- » Auto Wipers
- » Automatic
- » Electronic Fuel Injection
- » Power Windows & Mirrors



Superior Cars, Phone 06 759 9992, Email superior.cars@xtra.co.nz  
188 St Aubyn Street, New Plymouth, New Plymouth 4310, New Zealand  
www.superiorcars.co.nz

\* Finance calculation based on a 48 month term, \$500.00 deposit and with an example annual fixed interest rate of 16%. Actual interest rate may be higher or lower. Includes an establishment fee of \$360.00 and a monthly maintenance fee of \$5.00. Full term total amount payable of \$18,220.29. Estimate only, not an offer of finance. Terms, conditions and lending criteria apply.